

HIGH FREQUENCY SOLAR INVERTER PV1800 ECO Series

1.6~6.2KW | Dual output

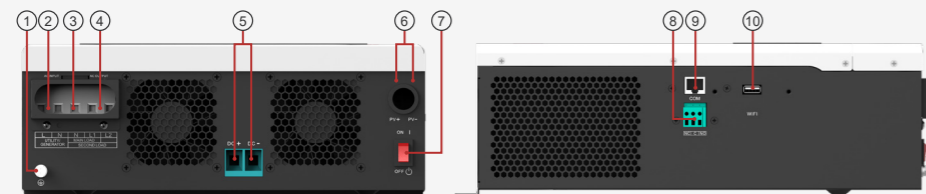
PV1800 ECO is a multi-function inverter/charger, combining functions of inverter, MPPT solar charge controller and battery charger to offer uninterruptible power support in portable size. PV1800 ECO Series can run without battery. The Maximum PV input voltage can reach 400V/450V/500V, which can help customers make full use of solar energy.(For 1.6~6.2KW)



- Pure sine wave output
- Smart LCD setting (Working modes, Charge Current, Charge Voltage, etc).
- Built-in MPPT solar charge controller
- Wide PV input voltage range
- Can provide the power to the load without battery
- Combining solar system, AC utility, and battery power source to supply continuous power
- Overload, short circuit and Deep discharge protection
- Cold start function
- Support RS485,CAN monitoring function
- Dual outputs for smart load management
- Can communicate with lithium batteries (CAN port)

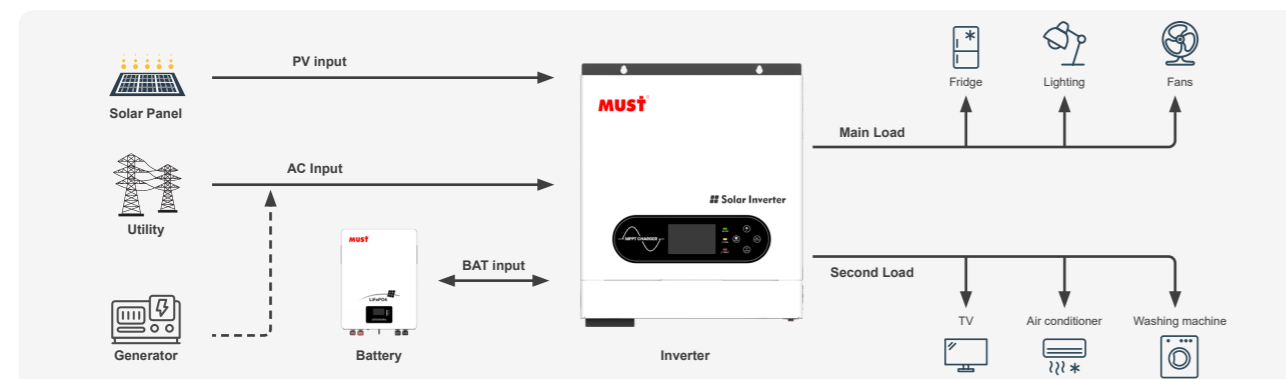
Back panel description

3.5KW



- | | |
|------------------|----------------------------------|
| 1. Ground | 6. PV input |
| 2. AC Input | 7. ON/OFF Switch |
| 3. AC Output1 | 8. RS-485/CAN Communication port |
| 4. AC Output2 | 9. Dry Contact |
| 5. Battery Input | 10. WiFi port |

Solar system connection



MODEL	PV18-1612 ECO	PV18-2524 ECO	PV18-3024 ECO	PV18-3524 ECO	PV18-5548 ECO	PV18-6248 ECO
Default Battery System Voltage	12VDC	24VDC	24VDC	24VDC	48VDC	48VDC
INVERTER OUTPUT						
Rated Power	2000VA/1600W	2500VA/2500W	3000VA/3000W	3500VA/3500W	5500VA/5500W	6200VA/6200W
Output Channel	Dual	Dual	Dual	Dual	Dual	Dual
Surge Power	3200W	5000W	6000W	7000W	11000W	12400W
Waveform	Pure sine wave					
AC Voltage Regulation (Batt.Mode)	230VAC±5%(Setting)					
Inverter Efficiency(Peak)	>90%					
Transfer Time	Typical < 10ms , 20ms max					
AC INPUT						
Voltage	230VAC					
Selectable Voltage Range	170~280VAC(UPS) / 90~280VAC(APL) / 184~253VAC(VDE)					
Frequency Range	50Hz / 60Hz (Auto sensing)					
BATTERY						
Normal voltage	12V	24VDC	24VDC	24VDC	48VDC	48VDC
Floating Charge Voltage	13.7VDC	27.4VDC	27.4VDC	27.4VDC	54.8VDC	54.8VDC
Overcharge Protection	15VDC	30VDC	30VDC	30VDC	60VDC	60VDC
SOLAR CHARGER & AC CHARGER						
Maximum PV Input Voltage	400VDC	400VDC	400VDC	450VDC	450VDC	500VDC
Charging Algorithm	3-Step (Flooded Battery, AGM / GEL / LEAD Battery), 4-Step (Li)					
Maximum PV Array Power	2000W	4000W	4000W	4000W	6000W	6200W
PV Array MPPT Voltage Range(Typ.)	30~320VDC	30~320VDC	30~320VDC	60~360VDC	60~360VDC	120~450VDC
PV maximum input current	16A	18A	18A	18A	28A	28A
Maximum Solar Charge Current	80A	100A	100A	100A	100A	120A
Maximum AC Charge Current	80A	60A	60A	60A	100A	100A
Maximum Charge Current	80A	100A	100A	100A	100A	120A
MECHANICAL SPECIFICATIONS						
Machine Dimension (W*H*D)	367*290*111 mm	367*290*111 mm	367*290*111 mm	367*318*122.5 mm	454*318*122.5 mm	428*318*140 mm
Package Dimension (W*H*D)	446*394*187 mm	446*394*187 mm	446*394*187 mm	446*410*200 mm	544.5*410*210 mm	550*400*220 mm
N.W	6.4kg	6.7kg	6.7kg	7.3kg	9.0kg	10.0kg
G.W	7.4kg	7.7kg	7.7kg	8.3kg	10.5kg	11.6kg
OTHER						
Humidity	5% to 95% Relative Humidity (Non-condensing)					
Operating Temperature	0°C~50°C					
Storage Temperature	-15°C -60°C					
CERTIFICATION & STANDARDS						
CE						